



steelceram

CERAMIC SOLUTIONS

Advanced technical ceramic solutions.

Textil, wire drawing lines and wire.



Zirconia Steelceram

Zirconia is a ceramic with a unique crystalline structure that makes it extremely resistant. This structure allows it to prevent the propagation of cracks through the core, providing excellent mechanical resistance and extreme hardness. As most other ceramics, it does not conduct electricity, and the maximum operating temperature is also very high.

Characteristics

Color: White

Density: 6 gr/cm³

Impact resistance: 8 Mpa.m^{1/2}

Flexural strength: 1200 Mpa

Compression Resistance: 2200 Mpa

Hardness: 1150 HV 10

Maximum operating temperature: 1000 °C

Thermal shock resistance: 290ΔT°C

Outstanding Properties

High flexural strength

High impact resistance



Alumina 95 Steelceram

Alumina or Aluminium oxide is a ceramic with a crystalline structure which makes it extremely hard. Compared to zirconia has a higher hardness but lower resistance to bending. That means it is a more fragile material. This alumina is a cheaper option than Al₉₉₅ for less demanding applications.

Characteristics

Color: Ivory

Density: 3,7 gr/cm³

Impact resistance: 3,5 Mpa.m^{1/2}

Flexural strength: 250 Mpa

Compression Resistance: 2400 Mpa

Hardness: 1150 HV 10

Maximum operating temperature: 1300 °C

Thermal shock resistance: 150ΔT°C

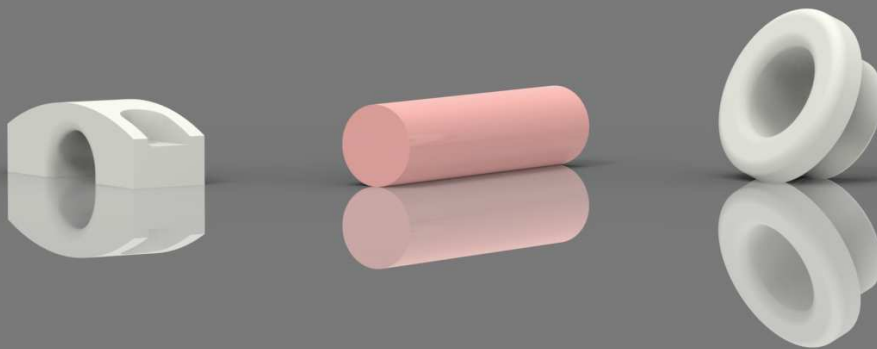
Featured Properties

Extreme hardness

Textile sector - Metallurgical



Steelceram manufactures wear-resistant technical ceramic components for the wire drawing and textile fiber industry to guide wire and wire without breaking, avoiding any risk that jeopardizes production. We guarantee a safe production, in addition to standard parts we produce special parts according to your particular requirements.



Ceramic cable drawing rings



Steelceram, manufactures drawing rings for the drawing industry in technical ceramics. high quality wear resistant avoiding any risk in production. We offer solutions for standard parts as well as special parts according to your particular requirements.

